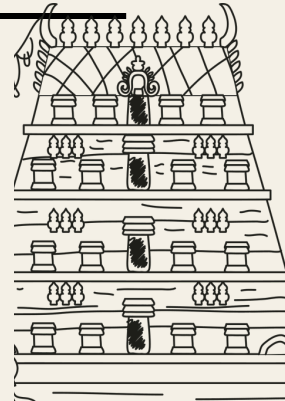


ANDHRA HERITAGE CHRONICLES



EXPLORING THE LEGACY, CULTURE, AND NATURAL HERITAGE OF ANDHRA PRADESH

ANDHRA PRADESH: A LAND WHERE HISTORY, CULTURE, AND NATURE THRIVE

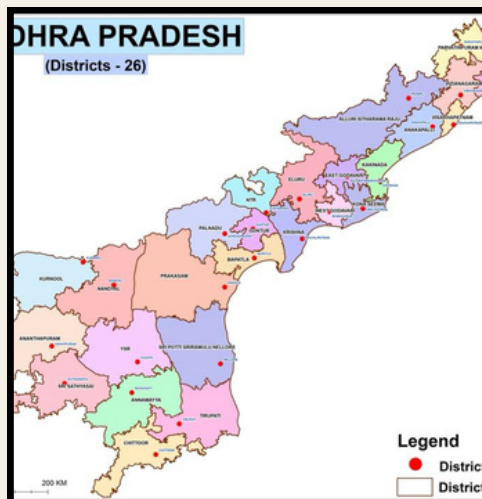
ANDHRA PRADESH IS ONE OF INDIA'S MOST CULTURALLY RICH STATES, KNOWN FOR ITS ANCIENT TEMPLES, BUDDHIST SITES, COASTLINES, FORESTS, RIVERS, AND TRADITIONAL ARTS. FROM THE MAGNIFICENT AMARAVATI STUPA TO THE SACRED TIRUMALA TEMPLE, THE STATE PRESERVES A HERITAGE THAT HAS FLOURISHED FOR THOUSANDS OF YEARS. ITS FESTIVALS, HANDLOOMS, DANCE FORMS, AND WILDLIFE MAKE ANDHRA PRADESH A UNIQUE BLEND OF HISTORY AND NATURE.



THE MAJESTIC PAPI HILL THE GODAVARI RIVER

QUICK FACTS

1. CAPITAL: AMARAVATI
2. OFFICIAL LANGUAGE: TELUGU
3. COASTLINE: ABOUT 974 KM
4. MAJOR RIVERS: GODAVARI, KRISHNA, PENNA
5. AREA: 1,62,975 SQ KM
6. FAMOUS FOR: TEMPLES, BUDDHIST HERITAGE, HANDLOOMS, WILDLIFE



NEWS BRIEFS

Amaravati Heritage Tourism Expands

New projects are being developed to promote the Buddhist heritage of Amaravati.

Lepakshi Draws More Visitors

The historic temple continues to attract tourists from across India.

Conservation Efforts Increase

Authorities are working to protect important heritage monuments and natural ecosystems.

GUARDIANS OF NATURE: ANDHRA PRADESH'S RICH BIODIVERSITY

FROM WETLANDS TO FORESTS AND COOATS, ANDHRA PRADESH NURTURES A WIDE VARIETY OF FLORA AN FAUNA



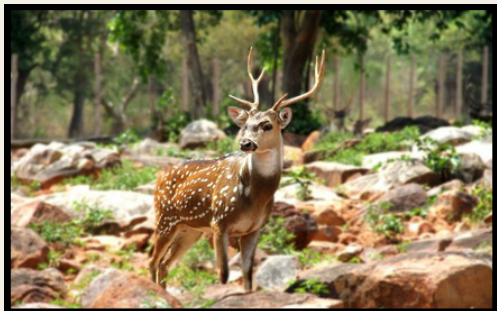
Kolleru Lake

One of Asia's largest freshwater lakes, Kolleru is an important home for migratory birds.



Papikonda National Park

Located along the Godavari River, this national park is famous for its scenic hills and rich biodiversity.



Sri Venkateswara National Park

The park protects rare wildlife such as the Indian leopard and sloth bear.

NATURE FACTS

ANDHRA PRADESH HAS SEVERAL PROTECTED WILDLIFE AREAS.

KOLLERU LAKE HOSTS THOUSANDS OF MIGRATORY BIRDS EVERY YEAR.

MANGROVE FORESTS HELP REDUCE COASTAL EROSION.

ENVIRONMENT NEWS

- Wetland conservation projects are increasing.
- Mangrove plantations help protect coastal biodiversity.
- Eco-tourism creates awareness about nature conservation.

DISCOVER ANDHRA PRADESH WHERE HERITAGE MEETS HOSPITALITY

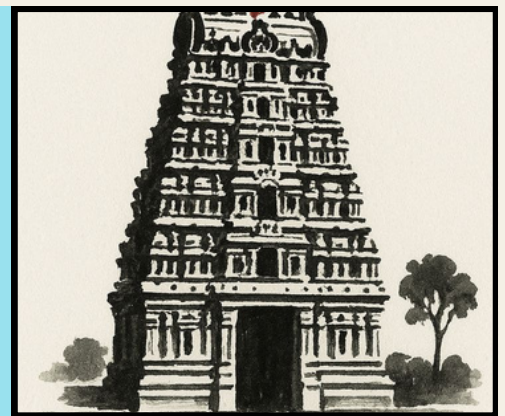
TEMPLES • BEACHES • WILDLIFE • CULTURE • CUISINE

"EVERY JOURNEY TELLS A STORY."

📞 BOOKINGS: 1800-999-HERITAGE

✉️ INFO@HERITAGEANDHRA.IN

"EXPERIENCE THE HISTORY, CULTURE, AND BEAUTY OF ANDHRA PRADESH."



ECHOES OF THE PAST: ANDHRA'S HISTORIC TREASURES



AMARAVATI:

THE HEART OF ANDHRA'S BUDDHIST HERITAGE

Once a thriving centre of Buddhist learning, Amaravati is one of Andhra Pradesh's most significant archaeological sites. Located on the banks of the Krishna River, it is famous for the Great Stupa, which dates back to around the 2nd century BCE. The site attracted monks, traders, and pilgrims from across Asia and played an important role in spreading Buddhist teachings. Today, archaeological remains, sculptures, and inscriptions continue to reveal the rich cultural history of ancient Andhra.

FACTS, CONTEXT, AND INSIGHT

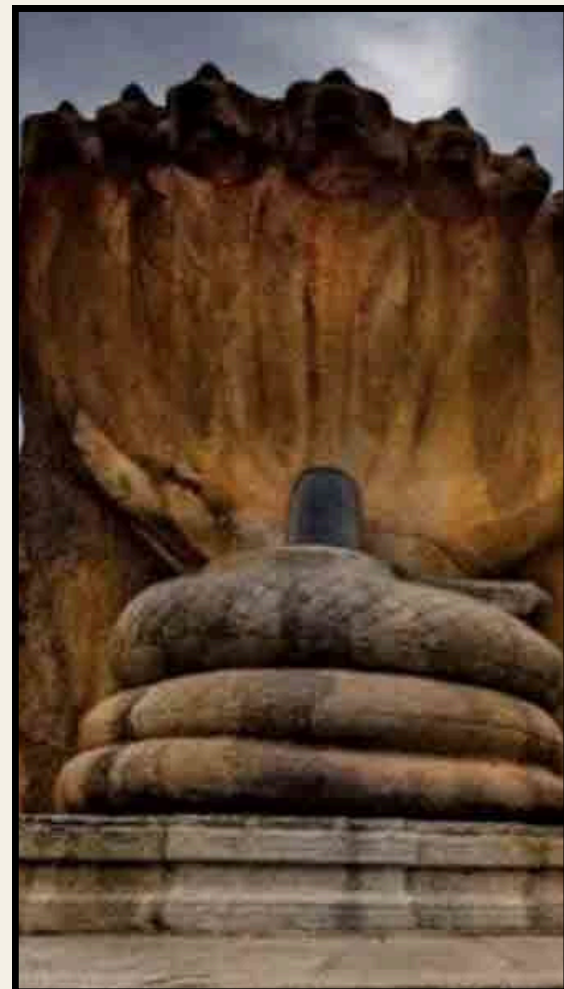
THE HERITAGE OF ANDHRA PRADESH REFLECTS CENTURIES OF CULTURAL EXCHANGE, ARTISTIC ACHIEVEMENT, AND RELIGIOUS DIVERSITY. ANCIENT DYNASTIES SUCH AS THE SATAVAHANAS, EASTERN CHALUKYAS, AND VIJAYANAGARA RULERS CONTRIBUTED TO THE DEVELOPMENT OF TEMPLES, FORTS, SCULPTURES, AND EDUCATIONAL CENTRES. HERITAGE SITES ACROSS THE STATE PROVIDE VALUABLE EVIDENCE ABOUT TRADE ROUTES, RELIGIOUS PRACTICES, AND DAILY LIFE IN EARLIER TIMES.

LEPAKSHI TEMPLE:

A MARVEL OF ARCHITECTURE

The Lepakshi Temple in Sri Sathya Sai district is one of the finest examples of Vijayanagara architecture. Built in the 16th century, the temple is famous for its intricate stone carvings, colourful mural paintings, and the mysterious hanging pillar that appears not to touch the ground completely.

Nearby stands a giant monolithic Nandi statue, one of the largest in India. Together, these monuments attract historians, architects, and tourists from around the world.



THE LIVING HERITAGE OF ANDHRA PRADESH

CULTURE, ART & TRADITIONS

Andhra Pradesh is known for its vibrant cultural heritage that has been preserved through generations. From classical dance and traditional paintings to handloom weaving and festive celebrations, the state's living traditions continue to shape everyday life. These cultural expressions are not only symbols of identity but also important links to the past.

Kuchipudi, one of India's eight classical dance forms, originated in the village of Kuchipudi in Krishna district. Combining graceful movements, music, and storytelling, the dance form has earned international recognition. Similarly, Kalamkari art, famous for its intricate hand-painted and block-printed textiles, reflects centuries-old artistic traditions inspired by mythology and nature.



KALAMKARI: ART ON CLOTH

KALAMKARI IS ONE OF ANDHRA PRADESH'S MOST CELEBRATED TRADITIONAL ART FORMS. THE WORD "KALAMKARI" MEANS "PEN WORK" AND REFERS TO THE USE OF A BAMBOO PEN FOR DRAWING DESIGNS ON FABRIC. ARTISANS USE NATURAL DYES AND TRADITIONAL TECHNIQUES TO CREATE DETAILED DEPICTIONS OF STORIES FROM THE RAMAYANA, MAHABHARATA, AND OTHER CULTURAL THEMES.

TODAY, KALAMKARI PRODUCTS ARE EXPORTED WORLDWIDE, HELPING PRESERVE THIS UNIQUE CRAFT WHILE SUPPORTING LOCAL ARTISAN COMMUNITIES.

HANDLOOMS, TOYS AND FESTIVALS

The handloom traditions of Mangalagiri and Venkatagiri are famous for their fine weaving and elegant designs. These textiles showcase the skill of generations of weavers and remain an important source of livelihood.

Kondapalli Toys, handcrafted from soft wood and painted in bright colours, represent another unique aspect of Andhra's heritage. These toys often depict village life, animals, and scenes from Indian mythology.

Festivals such as Ugadi and Sankranti bring communities together through traditional food, music, dance, and rituals. These celebrations help preserve cultural values while strengthening social bonds.

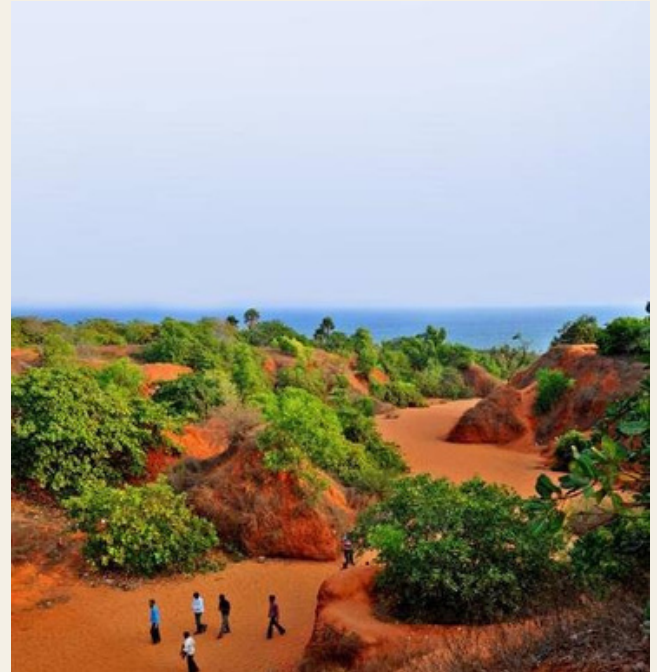


HERITAGE TODAY

BREAKING NEWS • CONSERVATION • CULTURE • ARCHAEOLOGY

ANDHRA PRADESH'S NATURAL HERITAGE MOVES

CLOSER TO UNESCO RECOGNITION The Government of India has included Erra Matti Dibbalu (Red Sand Hills) near Visakhapatnam and the Natural Heritage of Tirumala Hills in UNESCO's Tentative List of World Heritage Sites. This is the first step toward possible World Heritage status and highlights Andhra Pradesh's unique geological and natural heritage. The recognition is expected to encourage scientific research, conservation, and sustainable tourism.



BREAKING NEWS

- **ERRA MATTI DIBBALU IS A NATIONAL GEO-HERITAGE MONUMENT.**
- **TIRUMALA HILLS CONTAIN ROCK FORMATIONS OVER A BILLION YEARS OLD.**
- **AMARAVATI WAS ONE OF INDIA'S GREATEST BUDDHIST LEARNING CENTRES.**
- **ANDHRA PRADESH IS HOME TO HUNDREDS OF PROTECTED MONUMENTS MANAGED BY STATE AND CENTRAL ARCHAEOLOGICAL AUTHORITIES.**

CONSERVATION UPDATE

THE ARCHAEOLOGICAL SURVEY OF INDIA (ASI) CONTINUES CONSERVATION AND MAINTENANCE WORK AT IMPORTANT BUDDHIST HERITAGE SITES SUCH AS AMARAVATI AND NAGARJUNAKONDA. THESE MONUMENTS PRESERVE VALUABLE SCULPTURES, INSCRIPTIONS, AND ARCHAEOLOGICAL REMAINS THAT HELP RESEARCHERS UNDERSTAND THE HISTORY OF BUDDHISM IN SOUTH INDIA. CONSERVATION EFFORTS INCLUDE STRUCTURAL REPAIRS, SITE MAINTENANCE, DOCUMENTATION, AND VISITOR AWARENESS PROGRAMMES.

EDITORIAL, OPINION & FEATURES

PRESERVING HERITAGE FOR FUTURE GENERATIONS

HERITAGE IS MORE THAN OLD BUILDINGS AND MONUMENTS. IT INCLUDES TRADITIONS, LANGUAGES, CRAFTS, FORESTS, AND WILDLIFE. PROTECTING THESE TREASURES IS ESSENTIAL BECAUSE THEY CONNECT US WITH OUR HISTORY AND IDENTITY. EVERYONE CAN CONTRIBUTE BY RESPECTING HERITAGE SITES, SUPPORTING LOCAL ARTISANS, AND PROMOTING RESPONSIBLE TOURISM.

SUSTAINABLE TOURISM: THE WAY FORWARD

Tourism can create jobs and encourage conservation when managed responsibly. Clean surroundings, respect for local communities, and protection of natural resources ensure that future generations can enjoy Andhra Pradesh's rich heritage.

HERITAGE QUIZ

WHAT IS THE CAPITAL OF ANDHRA PRADESH?

WHICH TEMPLE IS FAMOUS FOR THE HANGING PILLAR?

NAME ONE FAMOUS TRADITIONAL ART OF ANDHRA PRADESH.

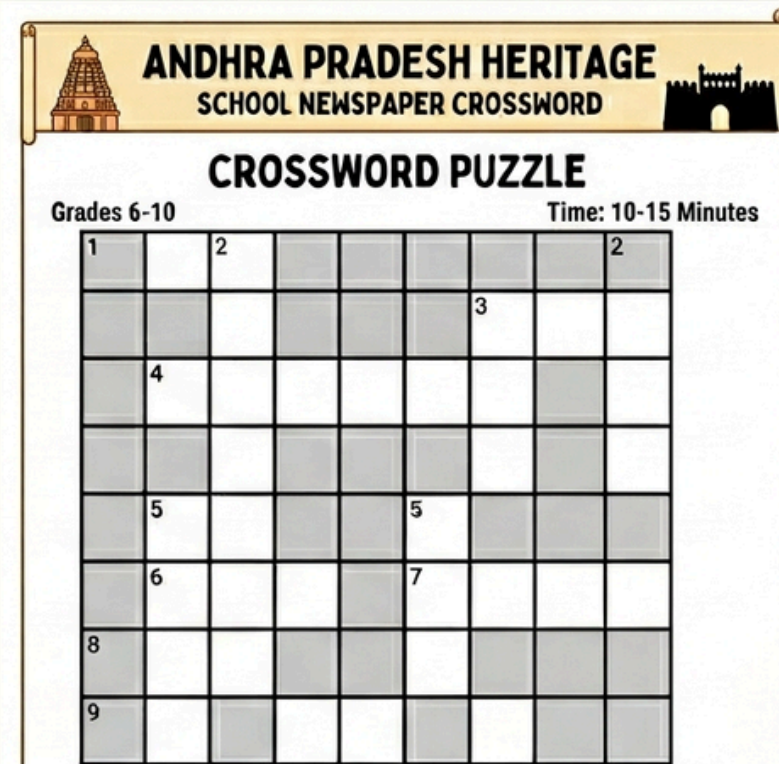
WHICH LAKE IS KNOWN FOR MIGRATORY BIRDS?

WHICH DANCE FORM ORIGINATED IN ANDHRA PRADESH?

DID YOU KNOW?

- TIRUMALA TEMPLE IS ONE OF THE BUSIEST PILGRIMAGE CENTRES IN THE WORLD.
- KOLLERU LAKE IS AN INTERNATIONALLY IMPORTANT WETLAND.
- LEPAKSHI TEMPLE IS FAMOUS FOR ITS HANGING PILLAR.
- KUCHIPUDI IS ONE OF INDIA'S CLASSICAL DANCE FORMS.

EDITORIAL, OPINION & FEATURES



ACROSS

1. Famous Buddhist monument
4. Historic Amaravati landmark
6. Historic fort in Kadapa
8. Name of great teacher/sage
9. Large ancient fortified building

DOWN

2. Ancient sculpture place near Hindupur
3. Main river in Amaravati
5. Capital city of AP
7. Archeological Survey of India

Heritage, Culture, Monuments

REFERENCES

- UNESCO WORLD HERITAGE CENTRE – INFORMATION ON LEPAKSHI TEMPLE AND UNESCO TENTATIVE LIST.
- ARCHAEOLOGICAL SURVEY OF INDIA (ASI) – INFORMATION ON PROTECTED MONUMENTS, CONSERVATION, AND ARCHAEOLOGICAL SITES.
- MINISTRY OF CULTURE, GOVERNMENT OF INDIA – HERITAGE CONSERVATION POLICIES AND CULTURAL HERITAGE INFORMATION.
- ANDHRA PRADESH DEPARTMENT OF ARCHAEOLOGY & MUSEUMS – OFFICIAL INFORMATION ON ANDHRA PRADESH'S ARCHAEOLOGICAL SITES AND MONUMENTS.
- ENCYCLOPAEDIA BRITANNICA – AMARAVATI SCULPTURE – HISTORICAL BACKGROUND ON THE AMARAVATI STUPA AND AMARAVATI SCHOOL OF ART.

ANSWER KEY

LEPAKSHI AMARAVATI
GANDIKOTA STUPA
ASI

CONTENT, RESEARCH AND DEVELOPMENT
HERITAGE EDUCATION AND COMMUNICATION
SERVICE (HECS),
INTACH 71, LODHI ESTATE, NEW DELHI- 110003
WWW.INTACH.ORG